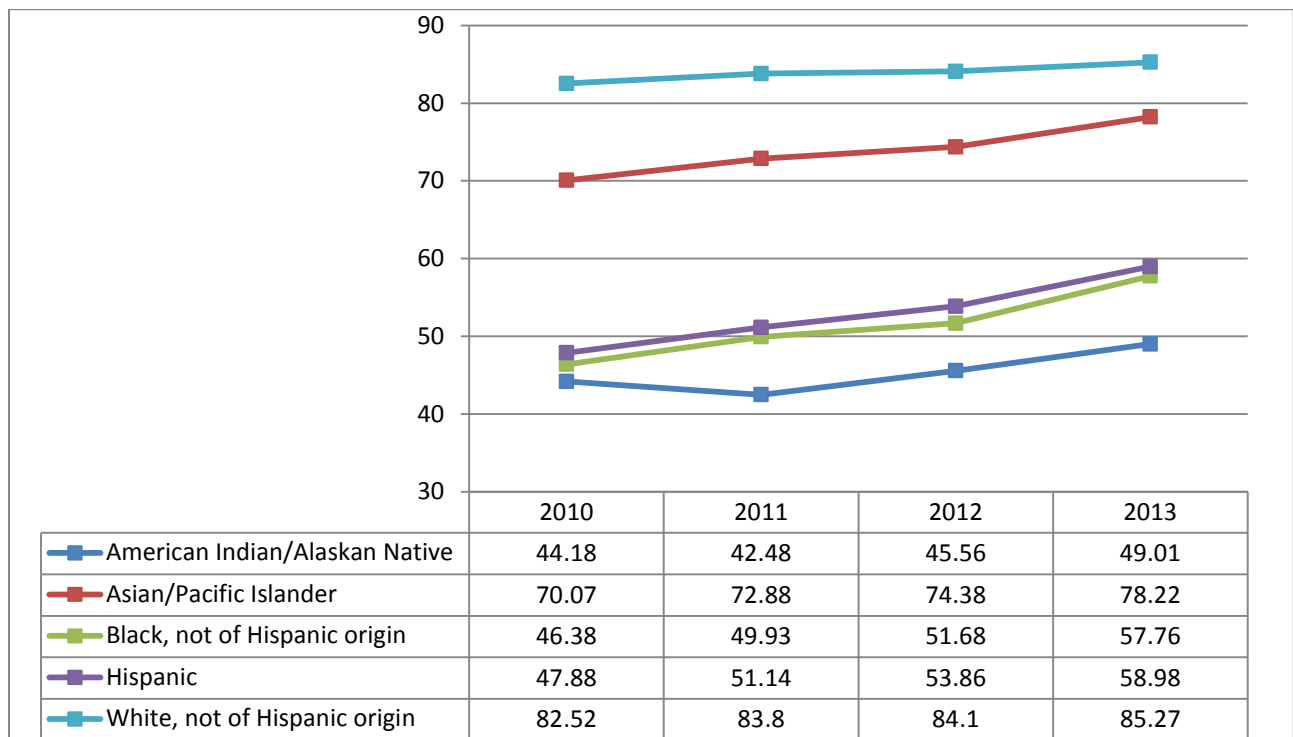


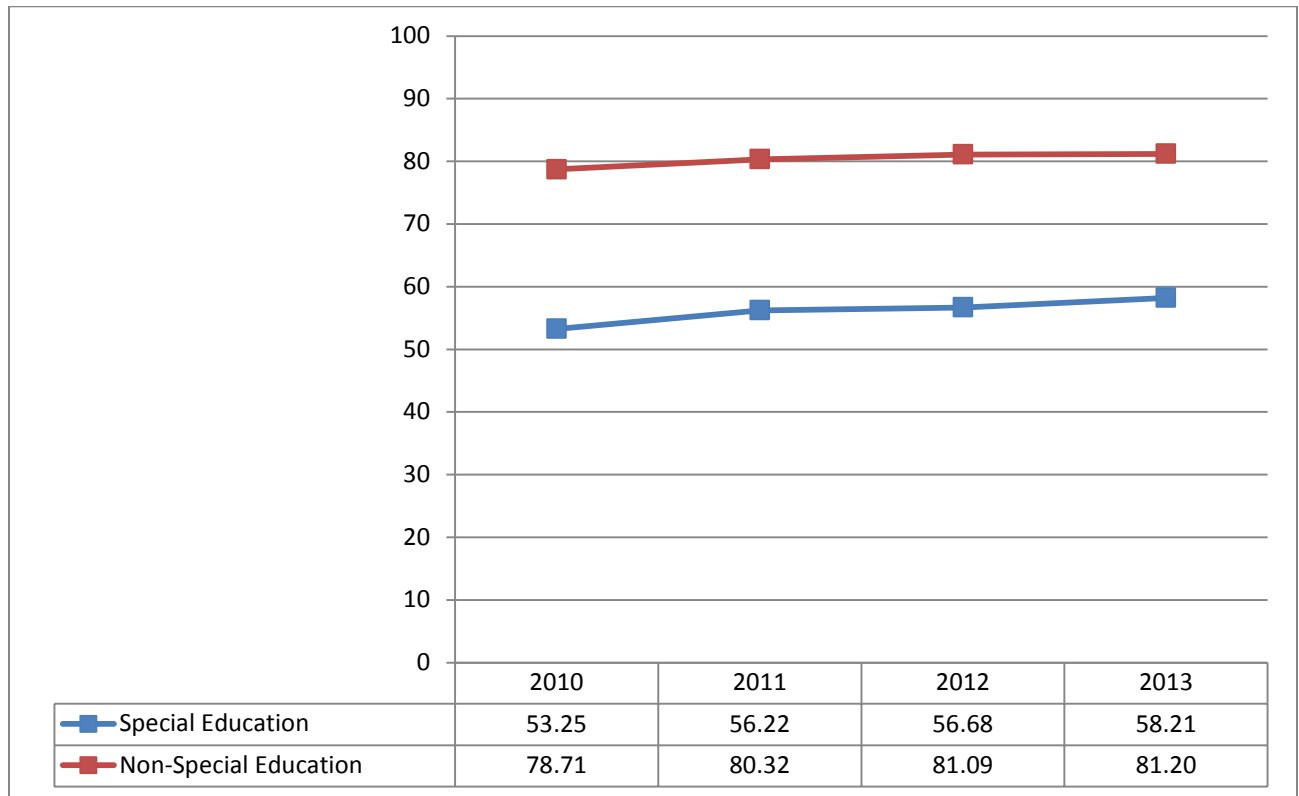
## Minnesota's Graduation Rates

*Rates by Student Group from 2010-2013*

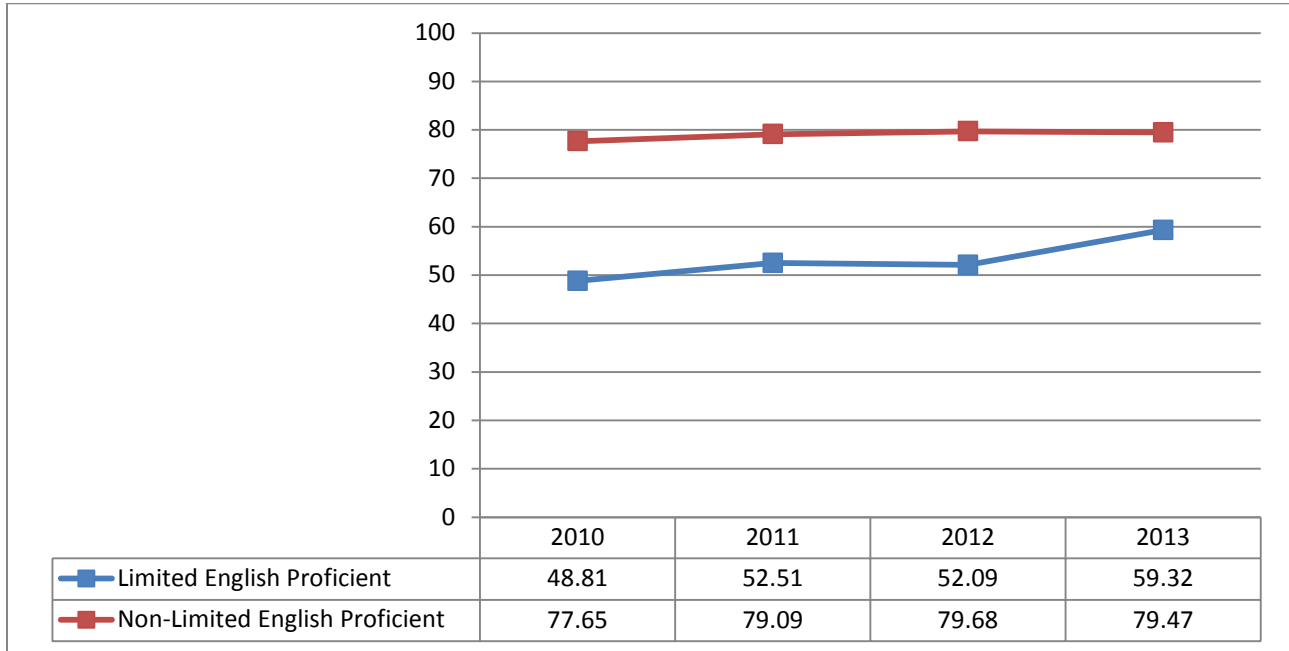
**Four-Year Graduation Rate by Ethnic Group (2010-2013)**



## Four-Year Graduation Rate for Special Education and Non-Special Education Students (2010-2013)



## Four-Year Graduation Rate for English Learners and Non-English Learners (2010-2013)



### Four-Year Graduation Rate for Free/Reduced-Price Lunch and Non-Free/Reduced-Price Lunch Students (2010-2013)

