



# MTSS

in North St. Paul-Maplewood-Oakdale Schools

Cory McIntyre  
ISD622 Director of Student Services

---

---

---

---

---

---

---



## Why Multi-Tiered Systems of Support?

- ☞ Close our gaps – opportunity/access, achievement, suspensions
- ☞ Ensure equity of access to supports
- ☞ Reduce referrals for special education
- ☞ Increase graduation rates
- ☞ Produce graduates who are prepared for college or career
- ☞ Align use of resources for most meaningful impact

---

---

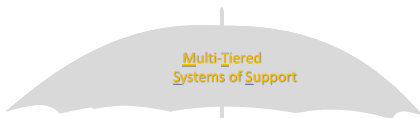
---

---

---

---

---



MTSS is a systemic approach that uses high quality instruction and increasingly intense interventions, measured learning rate and performance over time, and a coordinated decision making process to ensure a continuum of research-based supports are available to students.

---

---

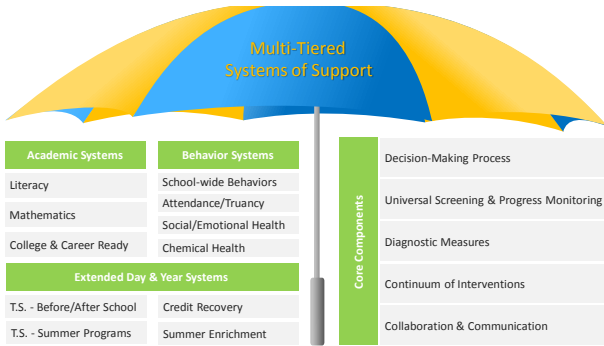
---

---

---

---

---




---

---

---

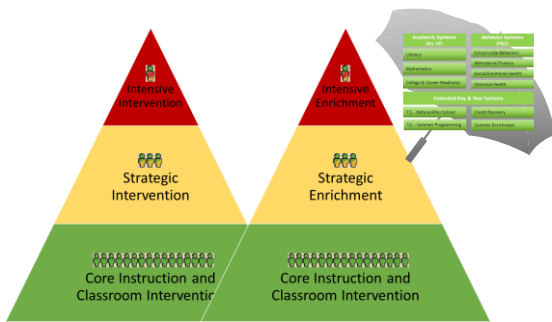
---

---

---

---

---




---

---

---

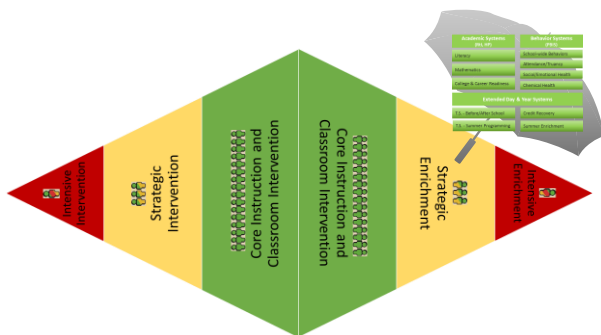
---

---

---

---

---




---

---

---

---

---

---

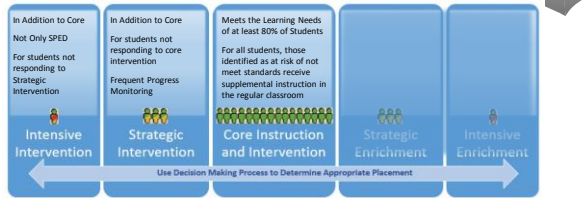
---

---

# Multi-Tiered Systems of Support Continuum

We've dropped the pyramid in favor of a continuum.

We're focusing on interventions while recognizing the need to eventually expand our work to include enrichment.




---

---

---

---

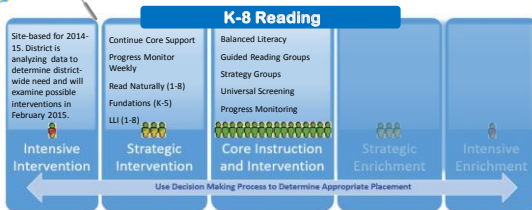
---

---

---

---

## Continuum of Interventions




---

---

---

---

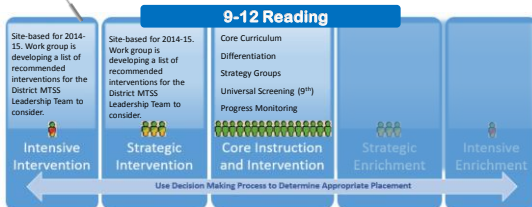
---

---

---

---

## Continuum of Interventions




---

---

---

---

---

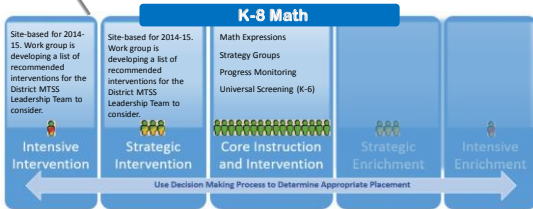
---

---

---



## Continuum of Interventions




---

---

---

---

---

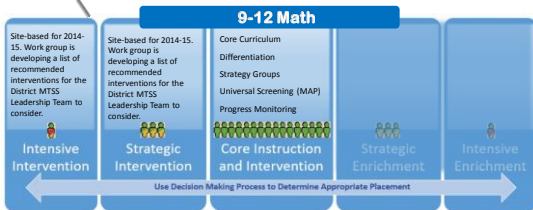
---

---

---



## Continuum of Interventions




---

---

---

---

---

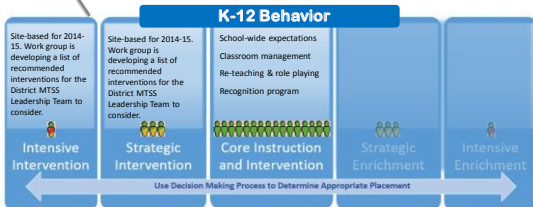
---

---

---



## Continuum of Interventions




---

---

---

---

---

---

---

---