

Minnesota Department of Education Positive Behavioral Interventions and Supports (PBIS) Initiative: 2004-19

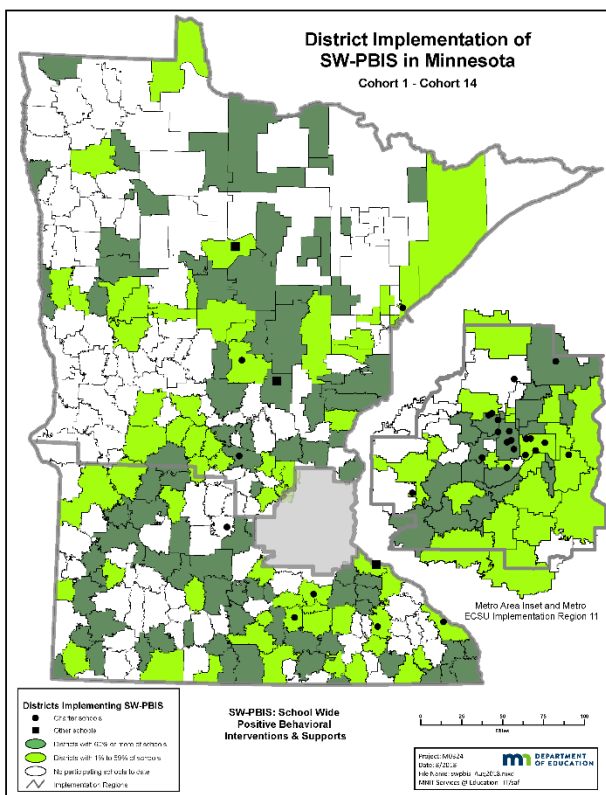
History and Purpose

In 2004, the Minnesota Department of Education (MDE) began collaboration with Dr. George Sugai, co-director of the national **Technical Assistance Center on Positive Behavioral Interventions and Supports (PBIS)**. Dr. Sugai worked with MDE to create a State Leadership Team and to develop a state action plan and Blueprint for supporting schools that were ready to implement School-wide Positive Behavioral Interventions and Supports (SW-PBIS) in Minnesota.

The first SW-PBIS training in Minnesota was offered in the summer of 2005. This initial two-year training included a cohort of nine schools from three independent school districts. The first cohort included elementary, middle, and high schools.

Since the first cohort of SW-PBIS schools were trained in 2005, Minnesota has added between 13 and 50 schools per year from a diverse group of districts, cooperatives and charters. Presently, twelve (12) cohorts have completed Minnesota’s two-year training sequence and have moved into a phase of sustained implementation. In 2009, to accommodate the growth of SW-PBIS implementation, Minnesota moved to a regional training model, dividing the state into three regions that coordinate the training, coaching and evaluation of new schools under the direction of the Minnesota PBIS State Leadership Team (SLT).

To start the 2018-2019 school year, there are **690 schools in 234 school districts or charters** implementing PBIS in Minnesota.



Minnesota PBIS State Leadership Team (SLT)

The Minnesota PBIS State Leadership Team (SLT) was created by MDE to guide state decisions with a composition of members representing the educators, parents, trainers and evaluators needed to support successful implementation of PBIS around the state. One of the primary functions of the SLT is to select school teams who are ready to join the state training initiative as demonstrated through the annual application process.

The Minnesota PBIS SLT is comprised of both MDE staff and representatives from the three Regional Implementation Projects (RIPs), along with individuals representing Minnesota PBIS trainers, coaches and evaluators. The SLT is collectively responsible for keeping PBIS work visible across the state; continuing to develop capacity for implementation and sustainability; securing support and funding for PBIS implementation and scale-up; preparation of new trainers and coaches; and providing statewide evaluation of PBIS implementation and outcomes.



For additional information on Minnesota School-wide Positive Behavioral Interventions and Supports (SW-PBIS)

Websites

[Minnesota Positive Behavioral Interventions and Supports](http://pbisMN.org)

(<http://pbisMN.org>)

[MDE Positive Behavioral Interventions and Supports](https://education.mn.gov/MDE/dse/sped/pbis)

(<https://education.mn.gov/MDE/dse/sped/pbis>)

MDE PBIS Management Team

[Ellen Nacik](#)

ellen.nacik@state.mn.us

[Janet Christensen](#)

janet.christensen@state.mn.us

[Mary Hunt](#)

mary.hunt@state.mn.us

[Clay Keller](#)

clay.keller@state.mn.us

[Eric Kloos](#)

eric.kloos@state.mn.us

[Garrett Petrie](#)

garrett.petrie@state.mn.us

[Rebecca Nies](#)

rebecca.nies@state.mn.us

[Erin Farrell](#)

erin.farrell@state.mn.us

Regional Implementation Project Coordinators

North: Regions 1&2, 3, 4, and 5&7

[Erin Engness](#)

pbis.erin@gmail.com

Metro: Region 11

(Partnership with Metro ECSU and MN Association for Children's Mental Health: MACMH)

[Lauren Sparr](#)

lauren.sparr@metroecsu.org

South: Regions 6&8, 9 and 10

[Hazel Ashbeck](#)

hazel.ashbeck@swsc.org